

CAMBRIA IRON COMPANY, CAR SHOP
(Bethlehem Steel Company, Paint Shop)
Cambria Iron Works
Lower Works
Johnstown
Cambria County
Pennsylvania

HAER No. PA-109-D

HAER
PA
11-JOTO,
135D-

PHOTOGRAPHS

WRITTEN HISTORICAL AND DESCRIPTIVE DATA

REDUCED COPIES OF MEASURED DRAWINGS

Historic American Engineering Record
National Park Service
Department of the Interior
P.O. Box 37127
Washington, D.C. 20013-7127

HISTORIC AMERICAN ENGINEERING RECORD

CAMBRIA IRON COMPANY, CAR SHOP
(Bethlehem Steel Company, Paint Shop)
Cambria Iron Works

HAER
PA
11-JOTO,
135D-

HAER No. PA-109-D

Location: Lower Works, Johnstown, Cambria
County, Pennsylvania

Quad: Johnstown, Pennsylvania

UTM: 17 E.676330 N.4467020

Date of Construction: ca. 1881

Fabricator: unknown

Present Owner: Bethlehem Steel Company

Present Use: Paint Shop

Significance: The shop is constructed of a heavy-timber frame with brick nogging, heavy-timber Howe roof trusses with iron tension rods, a wooden second floor with closely spaced 3' x 12' wood floor joists, multi-light windows with wood frames and mullions, and a stone foundation. It features a distinctive clipped-gable roof, probably the only one of its kind in an American steel works.

Historian: Gray Fitzsimons, ed.

Project Information:

The results of the study of Cambria County were published in 1990: Fitzsimons, Gray, editor, Blair County and Cambria County, Pennsylvania: An Inventory of Historic Engineering and Industrial Sites (Washington, D.C.: America's Industrial Heritage Project (AIHP) and HABS/HAER, National Park Service). The contents of the publication were transmitted to the Library of Congress as individual reports. Research notes, field photos and copies of historic photos collected during the project were transmitted to the AIHP Collection, Special Collections, Stapleton Library, Indiana University of Pennsylvania, Indiana, PA 15705.

HISTORY

Around 1881, the Cambria Iron Company erected this two-story building to serve as a car shop for the repair of the company's railroad rolling stock and coal-mining cars. The building housed a machine shop on the first floor, and a carpenter shop on the second. All of the machinery was originally belt driven. By the 1930s, the Car Shop was used strictly as a carpenter shop, and subsequently as a paint shop and mechanical office. In good condition, the building presently serves as a storage facility for the adjacent Carpenter Shop.

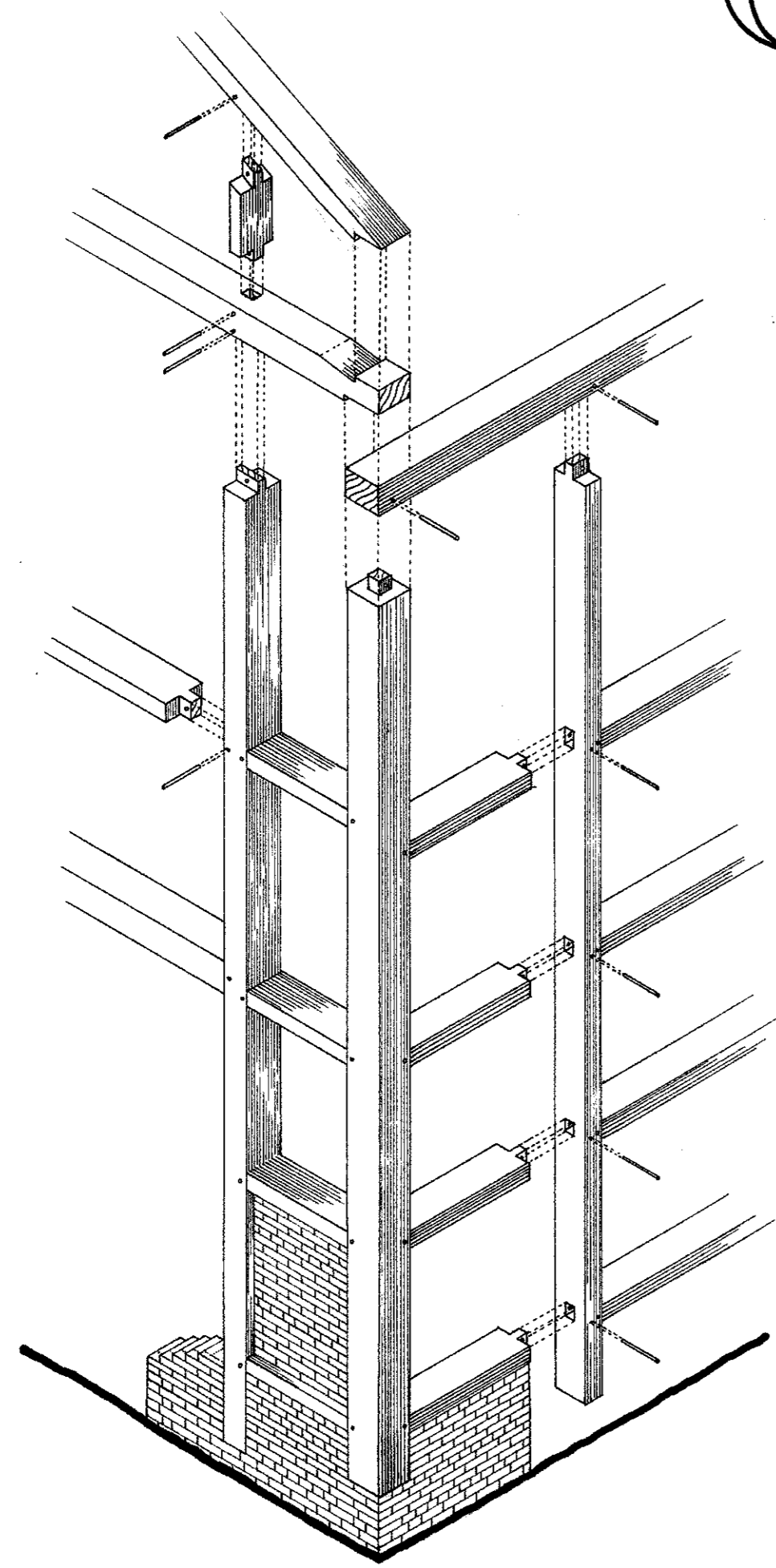
SOURCES

The Iron, Steel, and Allied Industries of Johnstown, Pennsylvania for the Information of Visiting Members of the Foreign and American Technical Societies. (n.p.: October 1890).

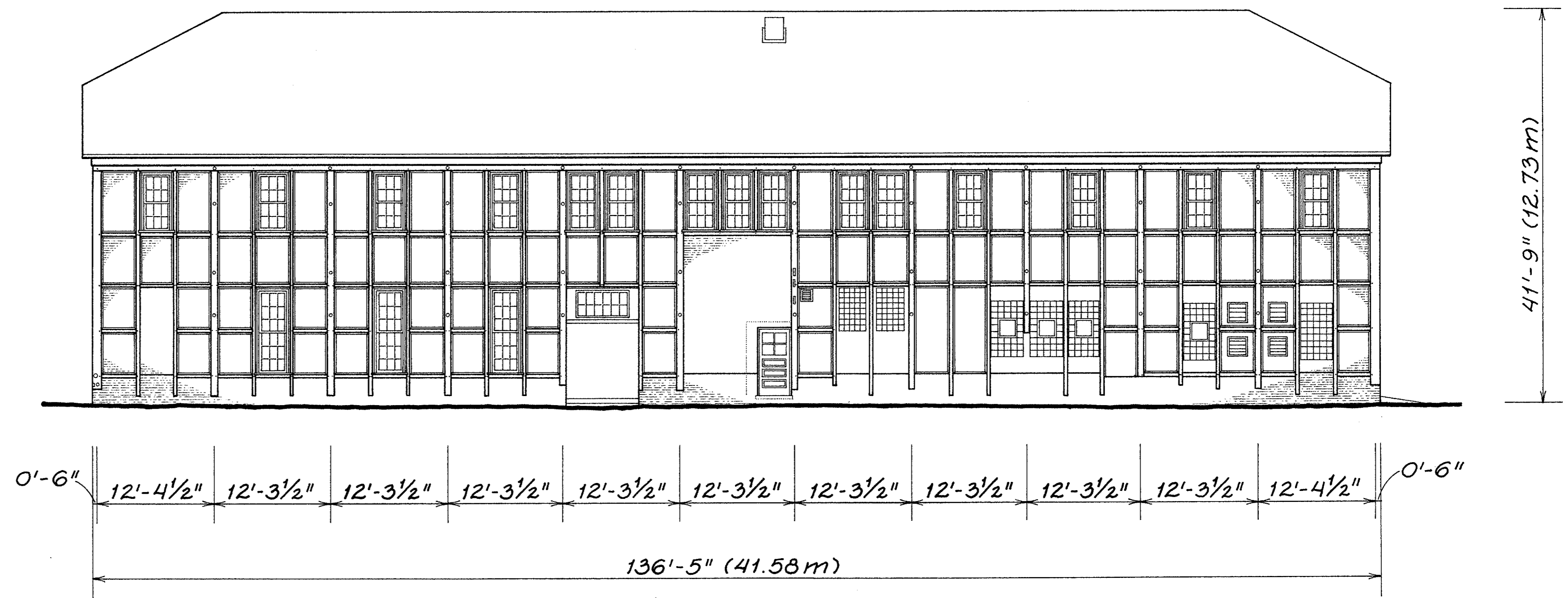
"Key Plan, Johnstown Plants: February 16, 1923; revised January 26, 1927, March 29, 1930, and February 13, 1939," (copy available at the Canal Museum, Center for Canal History and Technology, Easton, Pennsylvania).

Sanborn Map Company. Johnstown, Pennsylvania. New York: Sanborn Map Co., 1891 and 1911.

CAMBRIA IRON COMPANY: CAR SHOP • CA. 1881

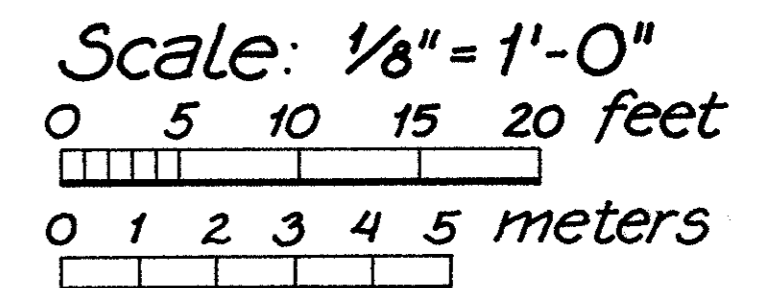


Corner Detail



East Elevation

About 1881 the Cambria Iron Company erected this two story building containing heavy timber-framing and brick nogging (the infilled brick walls). It served as a car shop presumably for the rolling stock of the company's captive railroad and possibly for the company's coal mining cars. The building housed a machine shop on the first floor and a carpenter shop on the second. By the 1930s it was used strictly as a carpenter shop, and subsequently as a paint shop and mechanical office. Currently serving as a storage facility, the building retains much of its original appearance including its distinctive clipped gable roof.



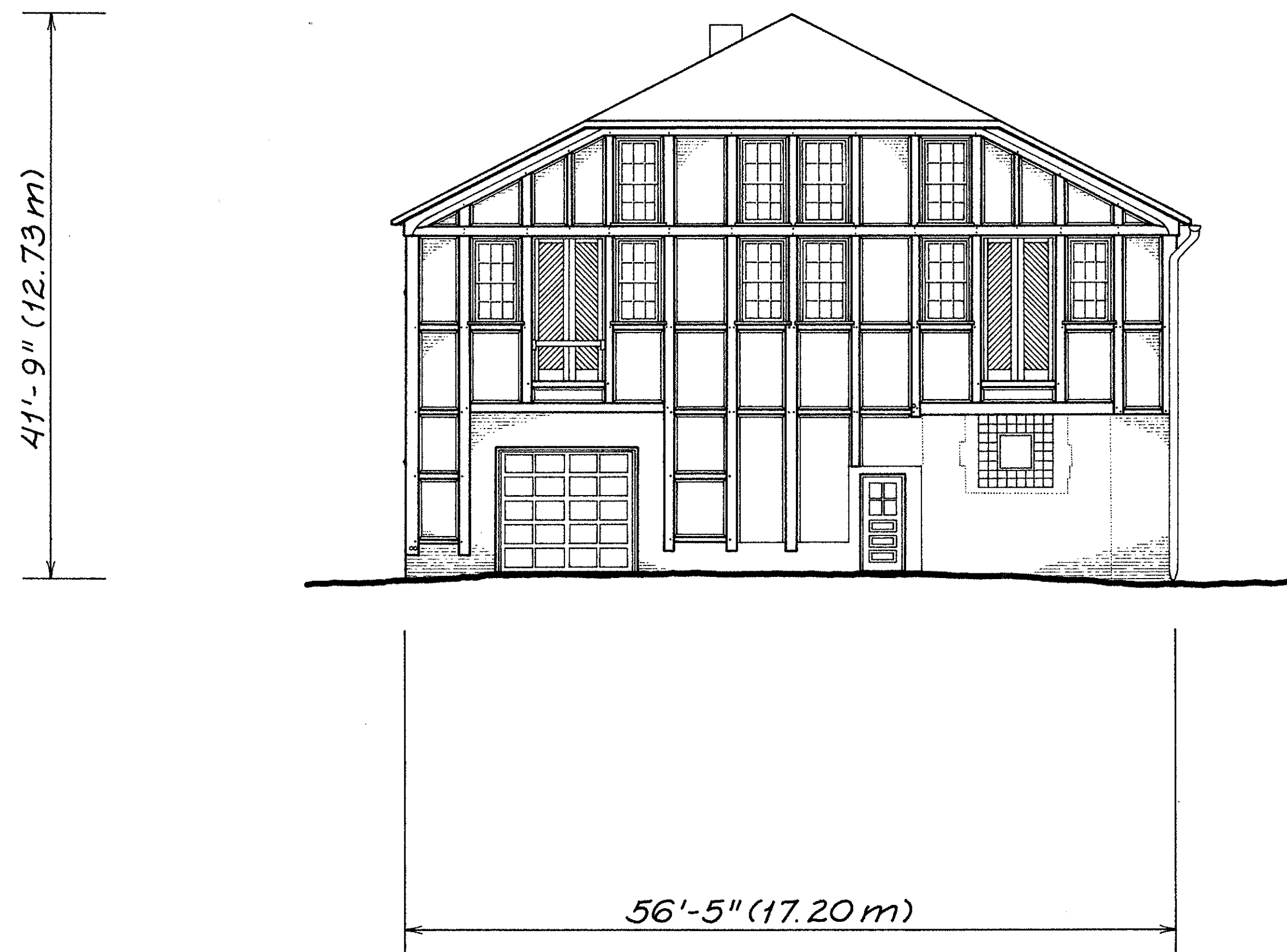
DELINEATED BY: Ruth Goodman, 1987

SOUTHWESTERN PENNSYLVANIA RECORDING PROJECT
HISTORIC AMERICAN ENGINEERING RECORD
UNITED STATES DEPARTMENT OF THE INTERIOR

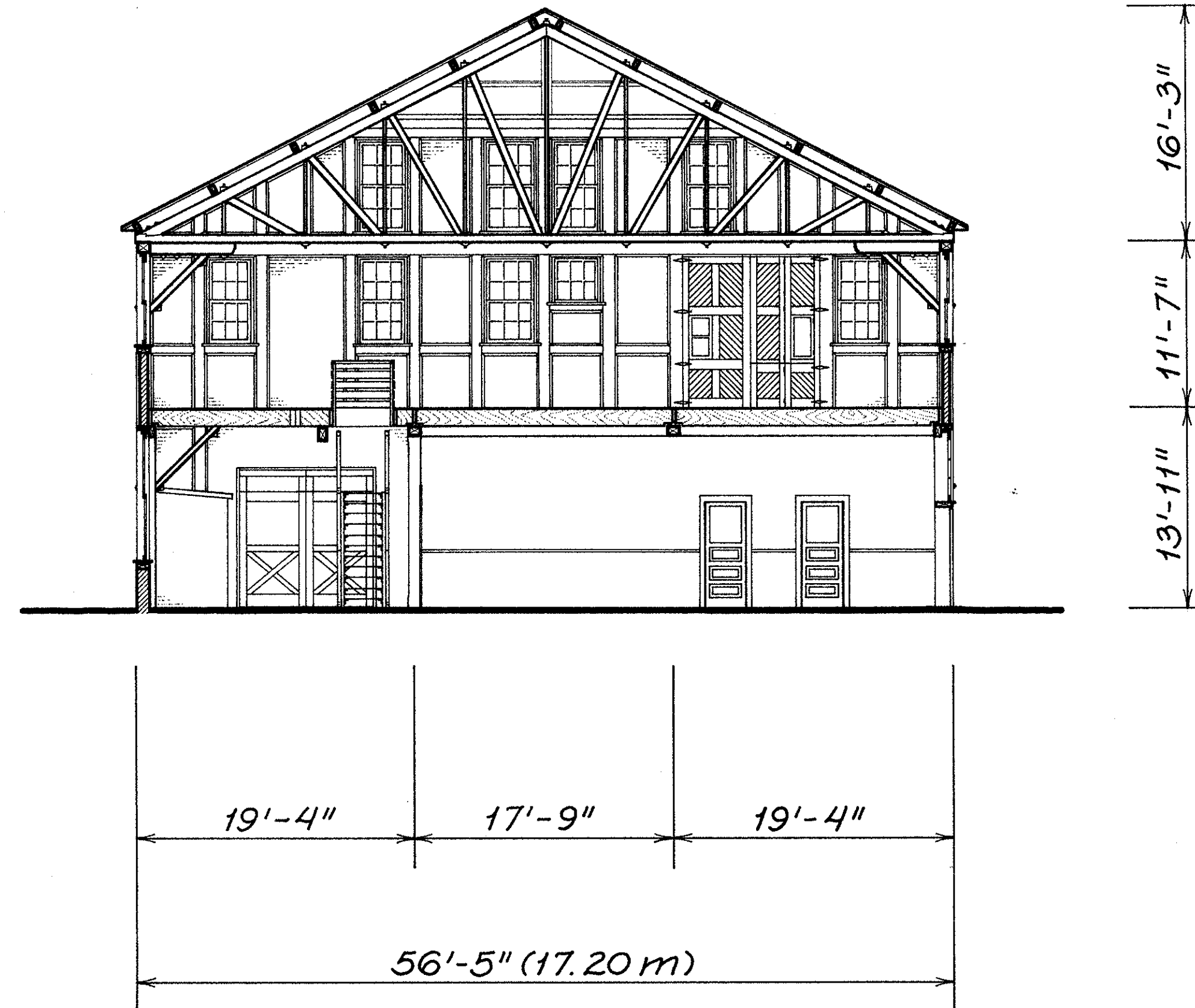
CAMBRIA IRON COMPANY, CAR SHOP - CA. 1881
EAST BANK OF CONEMAUGH RIVER, 5 MILES NORTH OF STONYCREEK CONFLUENCE
CAMBRIA COUNTY
PENNSYLVANIA

SHEET 1 of 3
HISTORIC AMERICAN ENGINEERING RECORD
PA - 109 - D

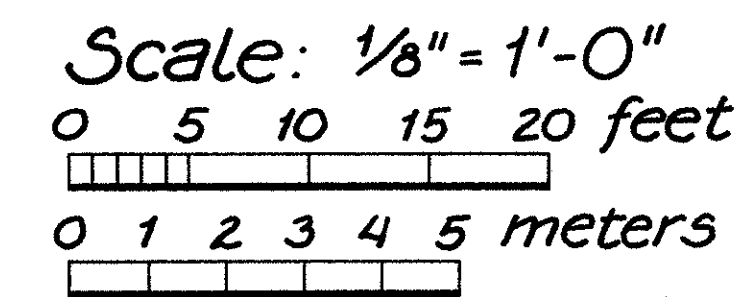
IF REPRODUCED, PLEASE CREDIT: HISTORIC AMERICAN ENGINEERING RECORD, NATIONAL PARK SERVICE, NAME OF DELINEATOR, DATE OF THE DRAWING



North Elevation



Section A-A



DELINEATED BY: Ruth Goodman, 1987

SOUTHWESTERN PENNSYLVANIA RECORDING PROJECT
HISTORIC AMERICAN ENGINEERING RECORD
UNITED STATES DEPARTMENT OF THE INTERIOR

JOHNSTOWN

CAMBRIA IRON COMPANY CAR SHOP - CA. 1881
EAST BANK OF CONEMAUGH RIVER .5 MILES NORTH OF STONYCREEK CONFLUENCE
CAMBRIA COUNTY

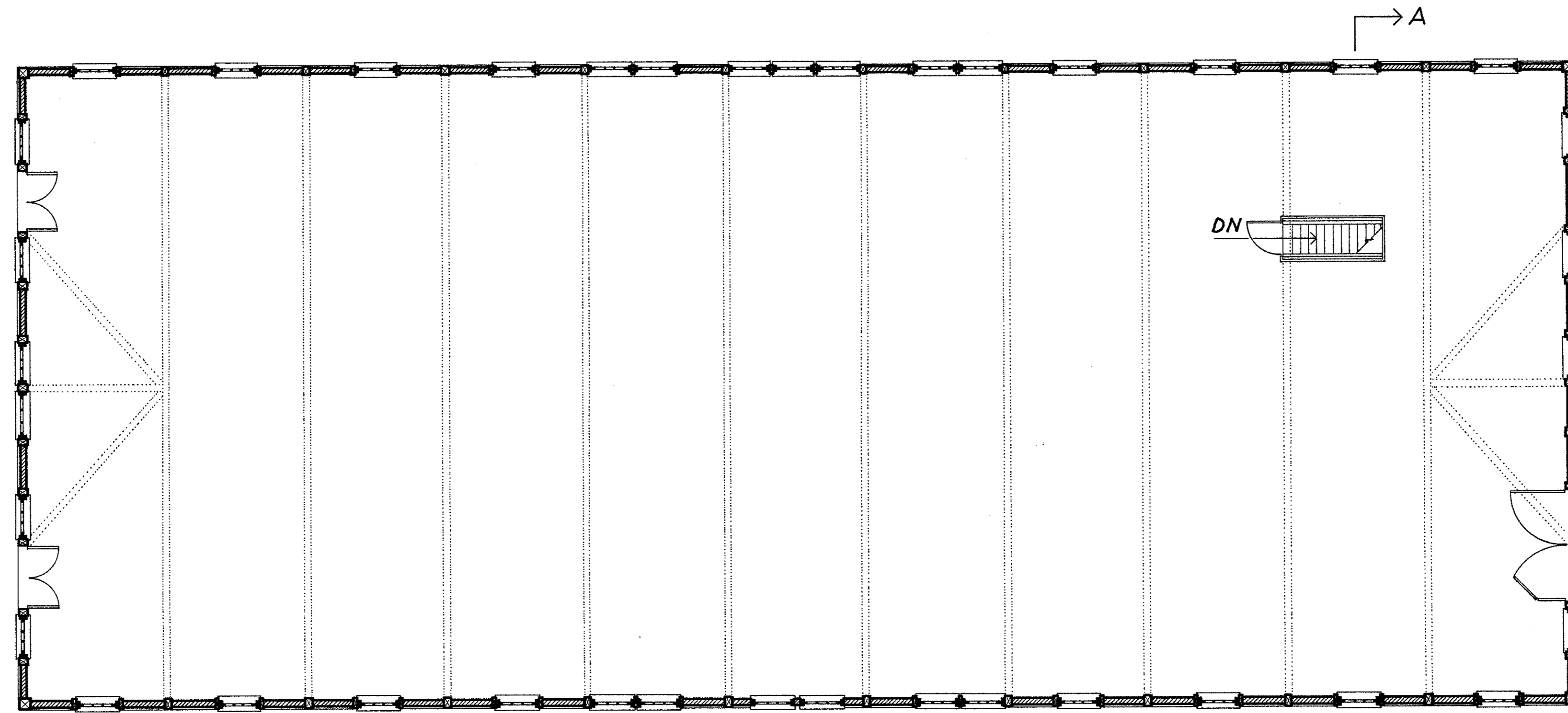
PENNSYLVANIA

SHEET
2 OF 3

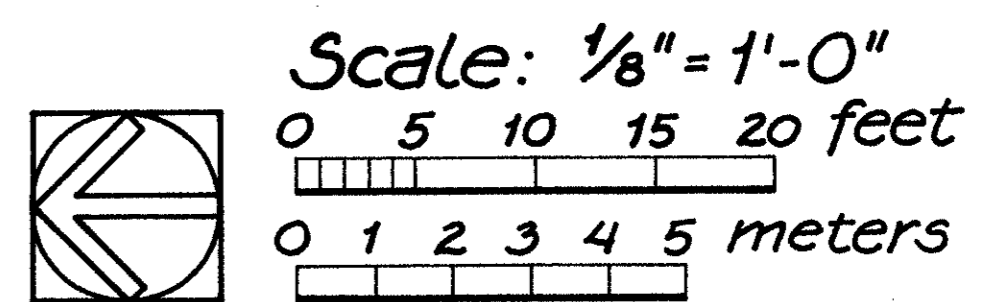
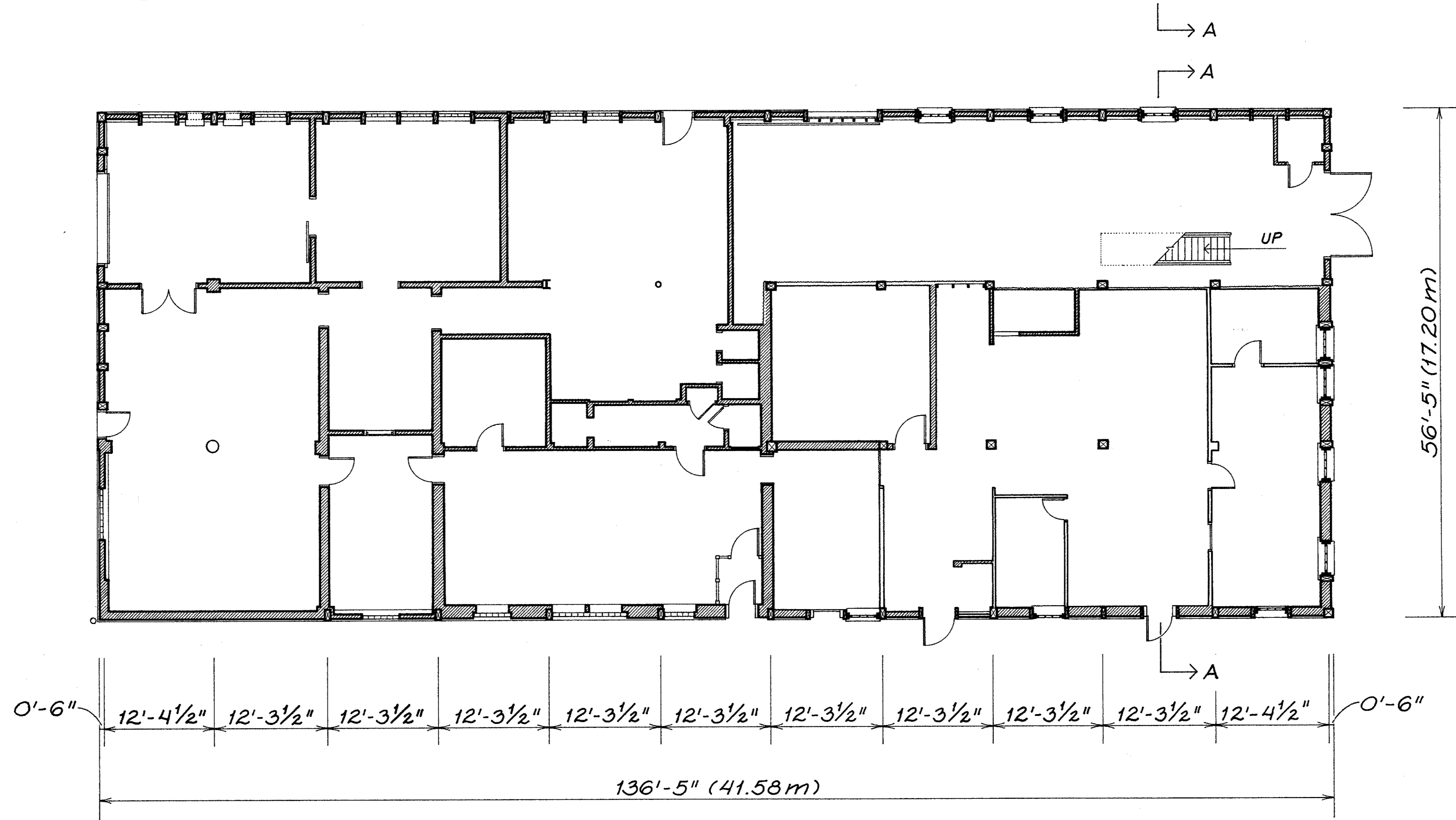
HISTORIC AMERICAN
ENGINEERING RECORD
PA - 109 - D

IF REPRODUCED, PLEASE CREDIT: HISTORIC AMERICAN ENGINEERING RECORD, NATIONAL PARK SERVICE, NAME OF DELINEATOR, DATE OF THE DRAWING

*Second
Floor Plan*



*First
Floor Plan*



DELINEATED BY: Ruth Goodman, 1987

SOUTHWESTERN PENNSYLVANIA RECORDING PROJECT
HISTORIC NATIONAL PARK SERVICE RECORD
UNITED STATES DEPARTMENT OF THE INTERIOR

JOHNSTOWN

CAMBRIA IRON COMPANY, CAR SHOP - CA. 1881
EAST BANK OF CONEMAUGH RIVER, 5 MILES NORTH OF STONYCREEK CONFLUENCE
CAMBRIA COUNTY

PENNSYLVANIA

SHEET 3 of 3

HISTORIC AMERICAN
ENGINEERING RECORD
PA - 109 - D

IF REPRODUCED, PLEASE CREDIT: HISTORIC AMERICAN ENGINEERING RECORD, NATIONAL PARK SERVICE, NAME OF DELINEATOR, DATE OF THE DRAWING