

CAMBRIA IRON COMPANY, PATTERN SHOP
(Bethlehem Steel Company, Carpenter's Shop)
Cambria Iron Works
Lower Works
Johnstown
Cambria County
Pennsylvania

HAER No. PA-109-B

HAER
PA
11-JOTO
135B-

PHOTOGRAPHS

WRITTEN HISTORICAL AND DESCRIPTIVE DATA

REDUCED COPIES OF MEASURED DRAWINGS

Historic American Engineering Record
National Park Service
Department of the Interior
P.O. Box 37127
Washington, D.C. 20013-7127

HISTORIC AMERICAN ENGINEERING RECORD
CAMBRIA IRON COMPANY, PATTERN SHOP
(Bethlehem Steel Company, Carpenter's Shop)
Cambria Iron Works

HAER
PA
11-JOTO
135B-

HAER No. PA-109-B

Location: Lower Works, Johnstown, Cambria
County, Pennsylvania
Quad: Johnstown, Pennsylvania
UTM: 17 E.676310 N. 4466950
Date of Construction: ca. 1870
Fabricator: unknown
Present Owner: Bethlehem Steel Corporation
Present Use: Carpenter's shop
Significance: The building features a distinctive
mansard roof composed of timber
rafters covered with an asphaltic
material. Many of the original
windows and decorative brick window
surrounds may be seen inside.
Pattern-makers lathe (ca. 1880)
survives.
Historian: Gray Fitzsimons

Project Information:

The results of the study of Cambria County were published in
1990: Fitzsimons, Gray, editor, Blair County and Cambria County,
Pennsylvania: An Inventory of Historic Engineering and Industrial
Sites (Washington, D.C.: America's Industrial Heritage Project
(AIHP) and HABS/HAER, National Park Service). The contents of the
publication were transmitted to the Library of Congress as
individual reports. Research notes, field photos and copies of
historic photos collected during the project were transmitted to
the AIHP Collection, Special Collections, Stapleton Library,
Indiana University of Pennsylvania, Indiana, PA 15705.

HISTORY

Around 1870 the Cambria Iron Company erected a two-story Pattern Shop adjacent to the Foundry . It originally measured 110' x 50' and contained a distinctive mansard roof covered with slate. The machinery inside, including saws, planers, sanders, and lathes, was powered by a central line shaft with belts connected to the individual machines. The patterns were used for castings in the adjacent foundry that serviced the iron works. Nearby, a series of two-story timber-frame buildings, containing brick nogging, were erected in the 1880s and served as pattern storage houses until the 1920s, when they were demolished. The only major additions to the Pattern Shop occurred in 1890 when Cambria Iron built a two-story, gable-roofed addition to the north, along with a three-story, brick, fire-hose tower. By 1893 the second story of the northern addition was in use and contained a circular saw, a band saw, a 12" lathe, and a 6" lathe. A central line shaft, extending along a north-south axis, powered this machinery. Currently, the Pattern Shop is used for carpentry work and contains electrically powered machinery.

SOURCES

Cambria Iron Company. "Arrangement of Machinery in North Wing, Second Floor of Pattern Shop; August 14, 1893," original drawing in possession of the Bethlehem Steel Corporation, Engineering Division, Johnstown.

Holley, A.L. and Smith, Lenox. "American Iron and Steel Works: Works of the Cambria Iron Company," Engineering: An Illustrated Weekly Journal, Vol. 26, (July 12 1878), 21-24.

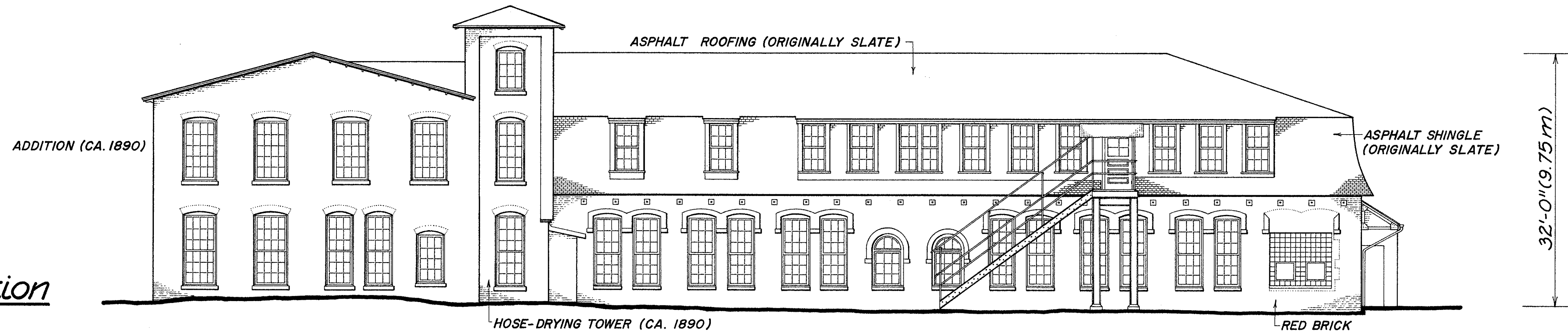
"Key Plan, Johnstown Plants: February 16, 1923; revised January 26, 1927, March 29, 1930, and February 13, 1939," (copy available at the Canal Museum, Center for Canal History and Technology, Easton, Pennsylvania).

Sanborn Map Company. Johnstown, Pennsylvania, New York: Sanborn Map Company, 1891 and 1911.

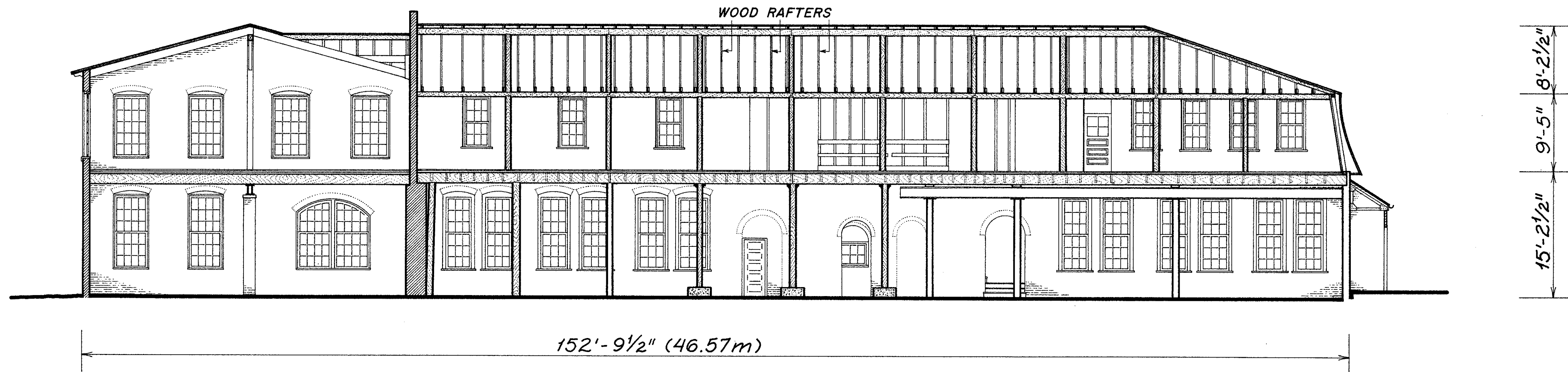
Tax Assessment Records for Millville Borough, Cambria County, for year 1871 and 1875, available at the Cambria County Courthouse, Ebensburg, Pennsylvania.

CAMBRIA IRON COMPANY: PATTERN SHOP • CA. 1870

West Elevation

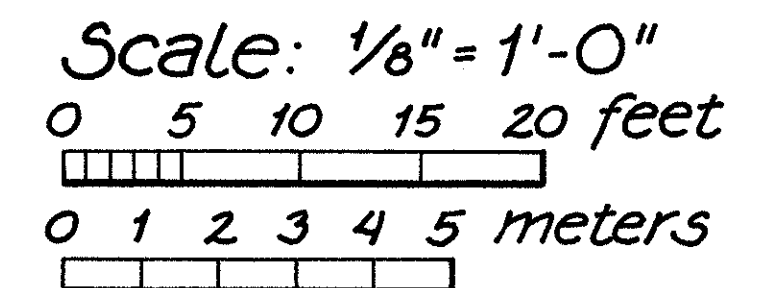


Section A-A



The Cambria Iron Company erected this two-story pattern shop adjacent to the machine shop about 1870. It originally measured 51 feet by 103 feet and contained a distinctive mansard roof covered with slate. The machinery inside, including saws, planers, and sanders, was belt-driven. The patterns were used for castings in the foundry that serviced the ironworks. A series of two-story timber-frame buildings (containing brick nogging),

erected around 1880 and located north of the foundry, served as pattern storage houses until they were demolished in the 1920s. The only major additions to the pattern shop occurred in 1890 when Cambria Iron built a two-story, gable-roofed addition, along with a three-story, brick, fire-hose tower.



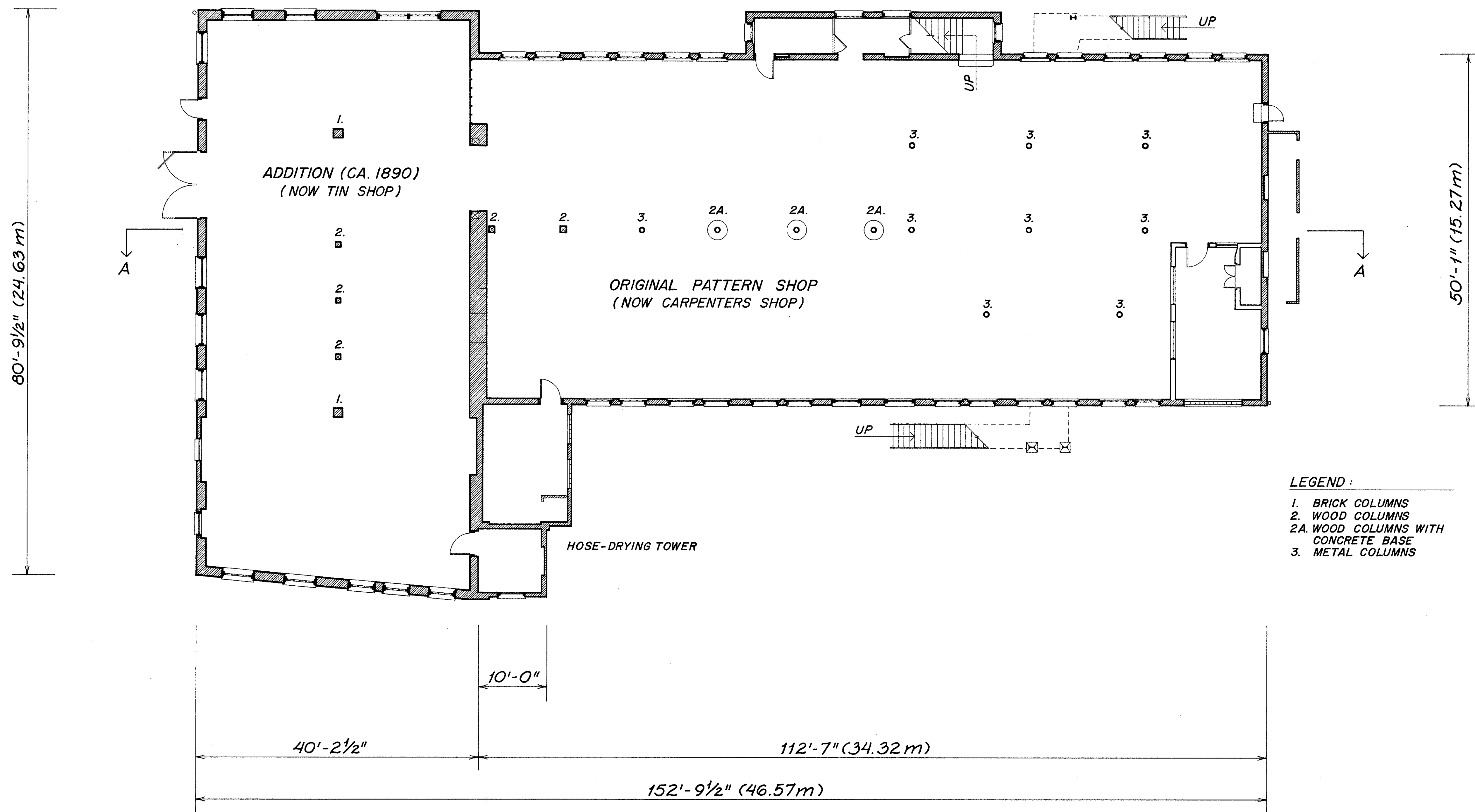
DELINEATED BY: *Ruth Goodman, 1987*
SOUTHWESTERN PENNSYLVANIA RECORDING PROJECT
HISTORIC NATIONAL PARK SERVICE RECORD
UNITED STATES DEPARTMENT OF THE INTERIOR

CAMBRIA IRON COMPANY, PATTERN SHOP - CA. 1870
EAST BANK OF CONEMAUGH RIVER, 5 MILES NORTH OF STONYCREEK CONFLUENCE
CAMBRIA COUNTY

HISTORIC AMERICAN
ENGINEERING RECORD
PA - 109 - B

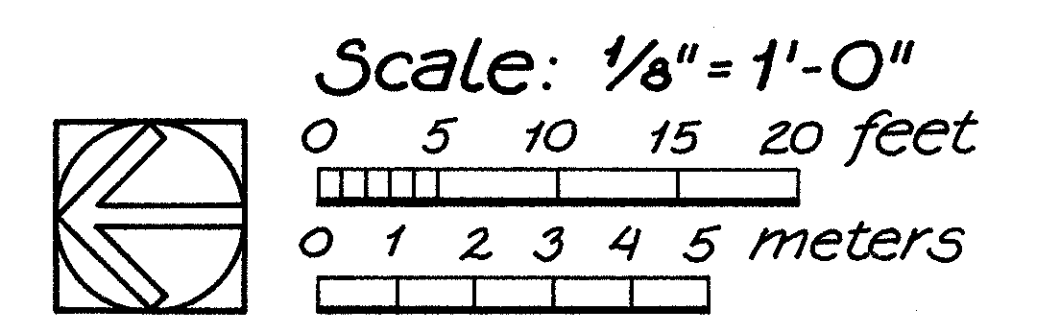
PENNSYLVANIA
SHEET
1 of 3

IF REPRODUCED, PLEASE CREDIT: HISTORIC AMERICAN ENGINEERING RECORD, NATIONAL PARK SERVICE, NAME OF DELINEATOR, DATE OF THE DRAWING



- LEGEND:**
- 1. BRICK COLUMNS
 - 2. WOOD COLUMNS
 - 2A. WOOD COLUMNS WITH CONCRETE BASE
 - 3. METAL COLUMNS

First Floor Plan



DELINEATED BY: Ruth Goodman, 1987

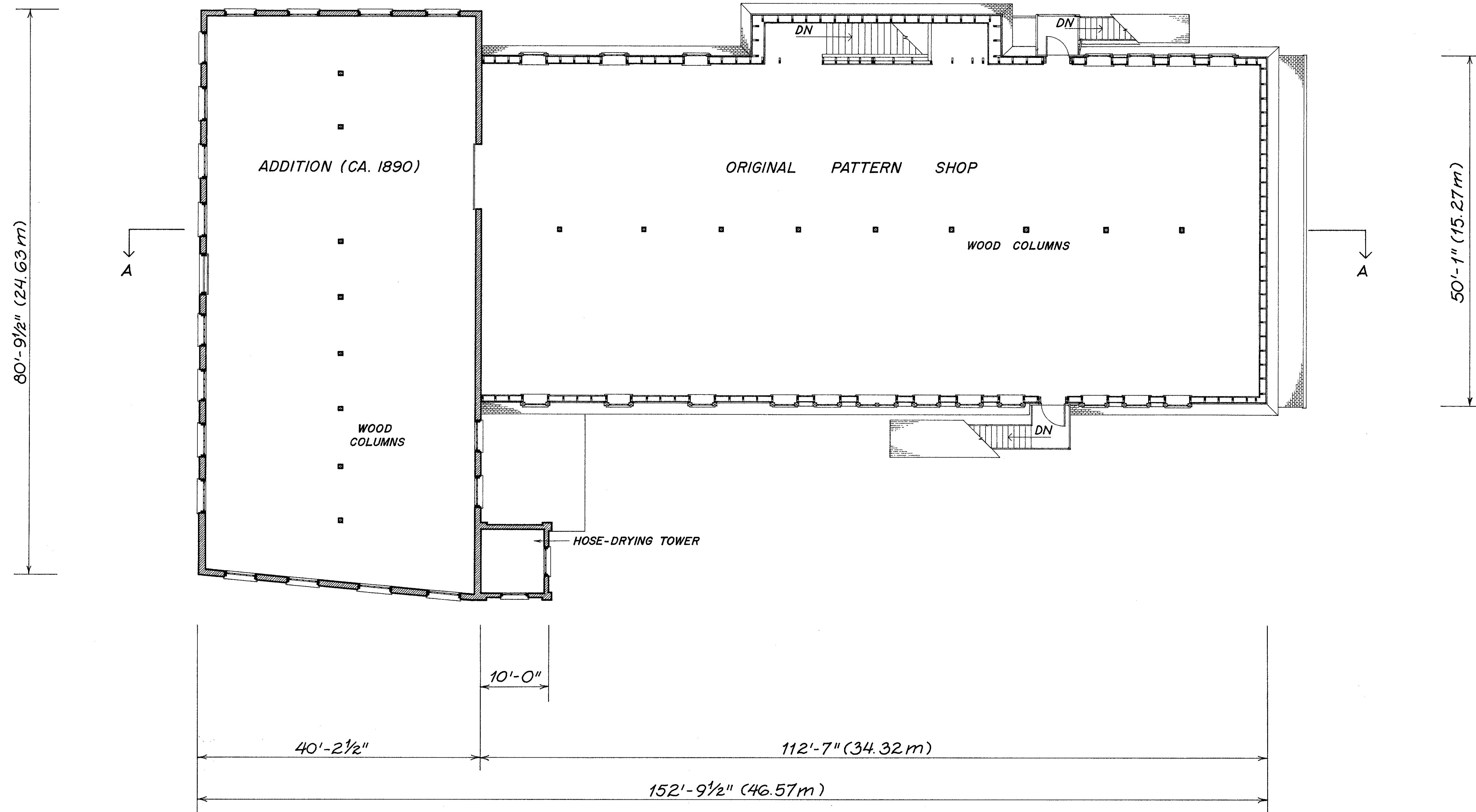
SOUTHWESTERN PENNSYLVANIA RECORDING PROJECT
HISTORIC AMERICAN ENGINEERING RECORD
NATIONAL PARK SERVICE
UNITED STATES DEPARTMENT OF THE INTERIOR

CAMBRIA IRON COMPANY, PATTERN SHOP - CA. 1870
EAST BANK OF CONEMAUGH RIVER, 5 MILES NORTH OF STONYCREEK CONFLUENCE
CAMBRIA COUNTY
PENNSYLVANIA

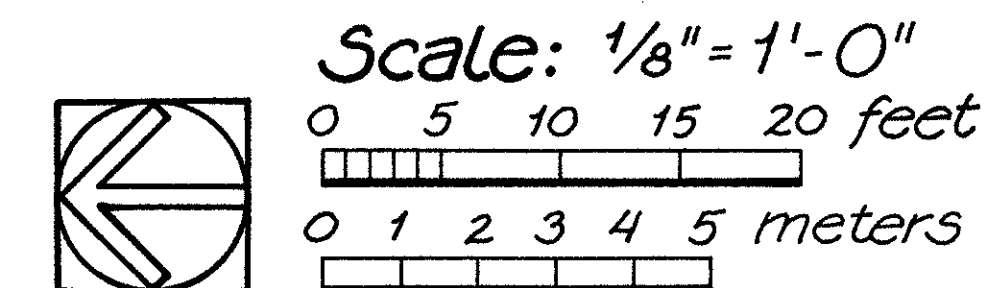
SHEET
2 of 3

HISTORIC AMERICAN
ENGINEERING RECORD
PA - 109-B

IF REPRODUCED, PLEASE CREDIT: HISTORIC AMERICAN ENGINEERING RECORD, NATIONAL PARK SERVICE, NAME OF DELINEATOR, DATE OF THE DRAWING



Second Floor Plan



DELINEATED BY: *Ruth Goodman, 1987*

SOUTHWESTERN PENNSYLVANIA RECORDING PROJECT
HISTORICALLY AND ARCHITECTURE RECORD
NATIONAL PARK SERVICE RECORD
UNITED STATES DEPARTMENT OF THE INTERIOR

JOHNSTOWN

CAMBRIA IRON COMPANY, PATTERN SHOP - CA. 1870
EAST BANK OF CONEMAUGH RIVER .5 MILES NORTH OF STONYCREEK CONFLUENCE
CAMBRIA COUNTY
PENNSYLVANIA

SHEET 3 OF 3

HISTORIC AMERICAN
ENGINEERING RECORD
PA - 109 - B

IF REPRODUCED, PLEASE CREDIT: HISTORIC AMERICAN ENGINEERING RECORD, NATIONAL PARK SERVICE, NAME OF DELINEATOR, DATE OF THE DRAWING