

CAMBRIA IRON COMPANY, ROLLING MILL OFFICE
(Bethlehem Steel Company, Mechanical Department)
Cambria Iron Works
Lower Works
Johnstown
Cambria County
Pennsylvania

HAER No. PA-109-C

HAER
PA
11-JOTG,
135C-

PHOTOGRAPHS

WRITTEN HISTORICAL AND DESCRIPTIVE DATA

REDUCED COPIES OF MEASURED DRAWINGS

Historic American Engineering Record
National Park Service
Department of the Interior
P.O. Box 37127
Washington, D.C. 20013-7127

HISTORIC AMERICAN ENGINEERING RECORD

CAMBRIA IRON COMPANY, ROLLING MILL OFFICE
(Bethlehem Steel Company, Mechanical Department)
Cambria Iron Works

HAER
PA
11-JOTO,
135C -

HAER No. PA-109-C

Location: Lower Works, Johnstown, Cambria
County, Pennsylvania

Quad: Johnstown, Pennsylvania

UTM: 17 E.676320 N.4466600

Date of Construction: ca. 1874

Fabricator: unknown

Present Owner: Bethlehem Steel Corporation

Present Use: Abandoned

Significance: The building has wrought-iron beam
flooring, brick vaulting, an
intersecting gable roof framed with
wood rafters, and a stone
foundation. It retains the stair
tower featuring a wrought-iron
spiral staircase; the original
cupola has been removed. Original
second-story windows are extant and
feature Gothic arches of brick
along the north facade.

Historian: Gray Fitzsimons

Project Information:

The results of the study of Cambria County were published in
1990: Fitzsimons, Gray, editor, Blair County and Cambria County,
Pennsylvania: An Inventory of Historic Engineering and Industrial
Sites (Washington, D.C.: America's Industrial Heritage Project
(AIHP) and HABS/HAER, National Park Service). The contents of the
publication were transmitted to the Library of Congress as
individual reports. Research notes, field photos and copies of
historic photos collected during the project were transmitted to
the AIHP Collection, Special Collections, Stapleton Library,
Indiana University of Pennsylvania, Indiana, PA 15705.

HISTORY

The Cambria Iron Company erected this two-and-one-half-story building about 1874 to serve as an office for its rolling mill operations. Throughout the years, the building served numerous functions: in 1911 it was listed as "Supplies Iron Company: Lower Works: "Supplies"; in 1917 it was noted as "Time Office and Supply House;" in 1930 it was called the "Stores Department Office and Dispensary;" and more recently it was called the "Mechanical Office." Originally it contained an intersecting gable roof covered with slate, windows with brick Gothic arches, and a wrought-iron spiral staircase topped by a wooden cupola. The cupola and stair tower measured 15' in diameter and nearly 70' in height. The floor and ceilings were constructed with vaulted brick-arches spanning between wrought-iron rails. Since the 1870s, a number of alterations have occurred including a three-story addition, constructed about 1900, and the removal of the cupola. Prior to its recent abandonment, the building served as the Mechanical Office.

SOURCES

Cambria Iron Company. "Rolling Mill Time Office; June 4, 1883," original drawing in the possession of the Bethlehem Steel Corporation, Engineering Division, Johnstown.

_____. "Plan of Cellar in New Office; December 7, 1870," in the possession of the Bethlehem Steel Corporation, Engineering Division, Johnstown.

"Key Plan, Johnstown Plants: February 16, 1923; revised January 26, 1927, March 29, 1930, and February 13, 1939," (copy available at the Canal Museum, Center for Canal History and Technology, Easton, PA).

Sanborn Map Company, Johnstown, Pennsylvania. New York: Sanborn Map Company, 1891, 1911 and 1913.

CAMBRIA IRON COMPANY: ROLLING MILL OFFICE • CA. 1874



Section A-A

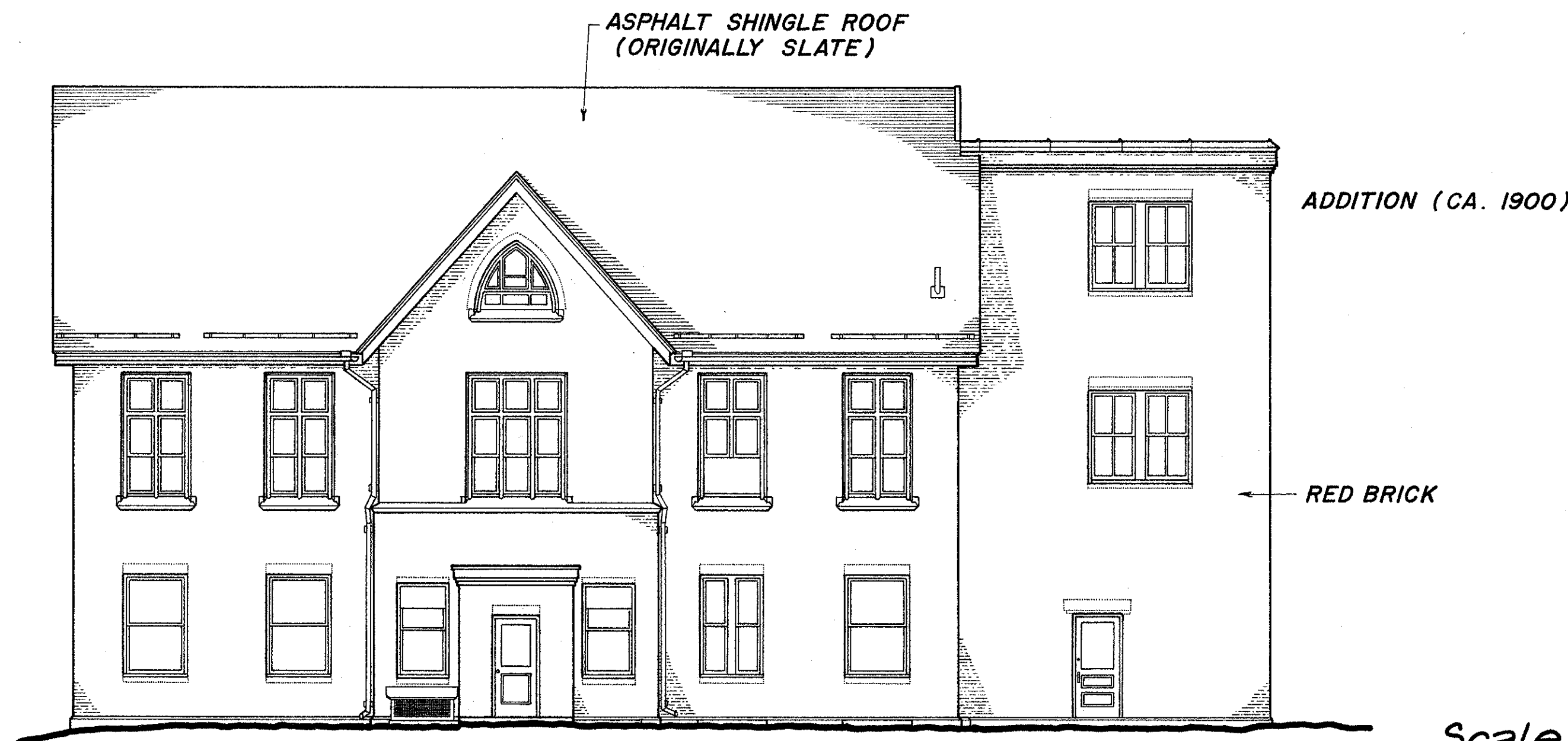


North Elevation

The Cambria Iron Company erected this two-and-one-half story building in 1874 to serve as an office for its rolling mill operations. Originally it contained an intersecting gable roof, covered with slate, windows with gothic brick arches, and a wrought-iron spiral staircase covered by a wooden cupola. The floor and ceilings were constructed with vaulted brick-arches spanning between wrought-iron (possibly steel) rails. Since the 1870s a number of alterations have occurred including a ca. 1900, three-story addition to the south elevation, and the removal of the cupola. Prior to its recent abandonment, the building had continued to serve as an office.



East Elevation



West Elevation

Scale: 1/8" = 1'-0"
 0 5 10 15 20 feet
 0 1 2 3 4 5 meters

DELINEATED BY: Matthew Heppner, 1987

SOUTHWESTERN PENNSYLVANIA RECORDING PROJECT
 HISTORIC PENNSYLVANIA RECORD
 NATIONAL PARK SERVICE RECORD
 UNITED STATES DEPARTMENT OF THE INTERIOR

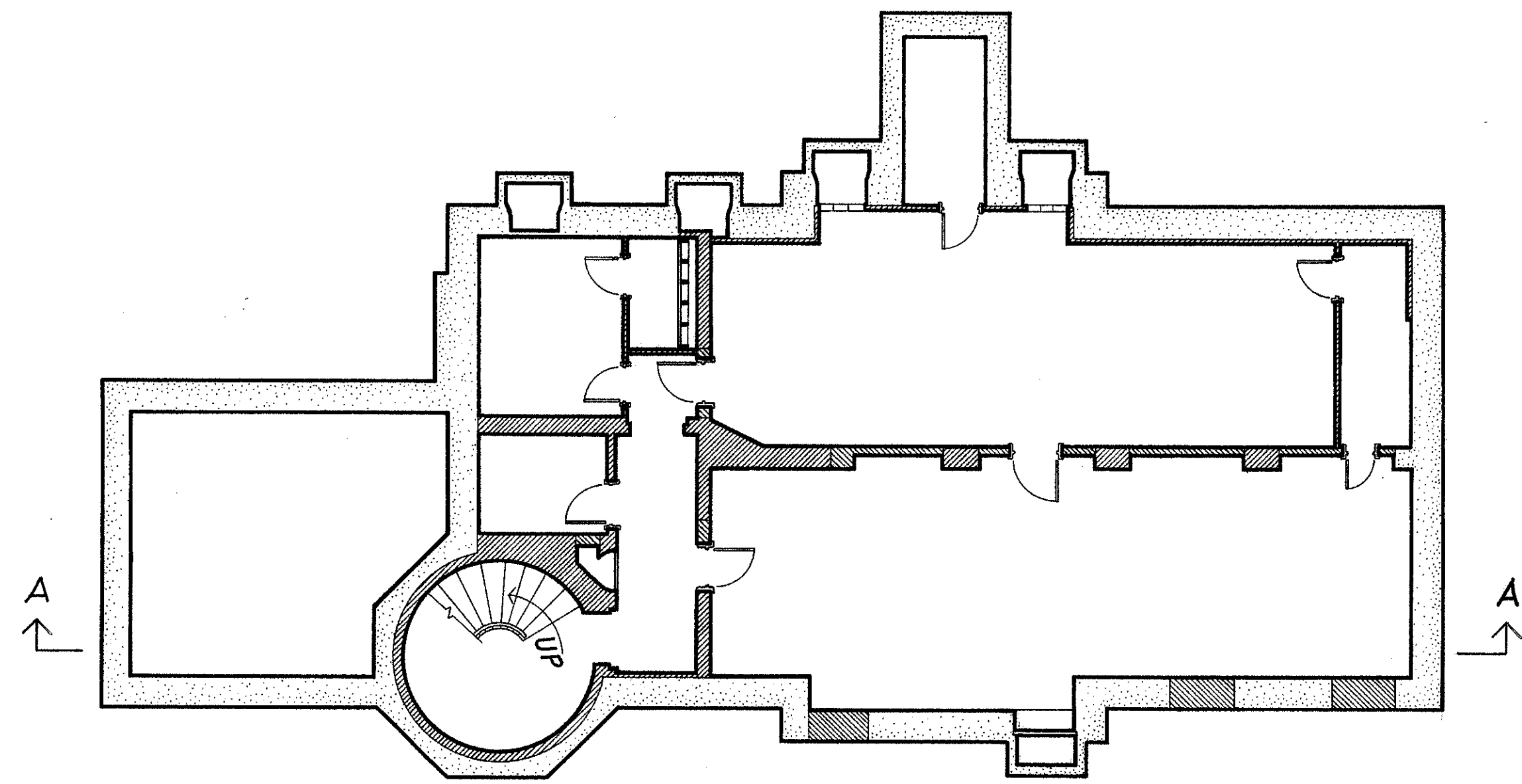
CAMBRIA IRON COMPANY ROLLING MILL OFFICE CA. 1874
 EAST BANK OF CONEMAUGH RIVER .5 MILES NORTH OF STONYCREEK CONFLUENCE
 CAMBRIA COUNTY PENNSYLVANIA

HISTORIC AMERICAN
 ENGINEERING RECORD
 SHEET 1 of 2
 PA-109-C

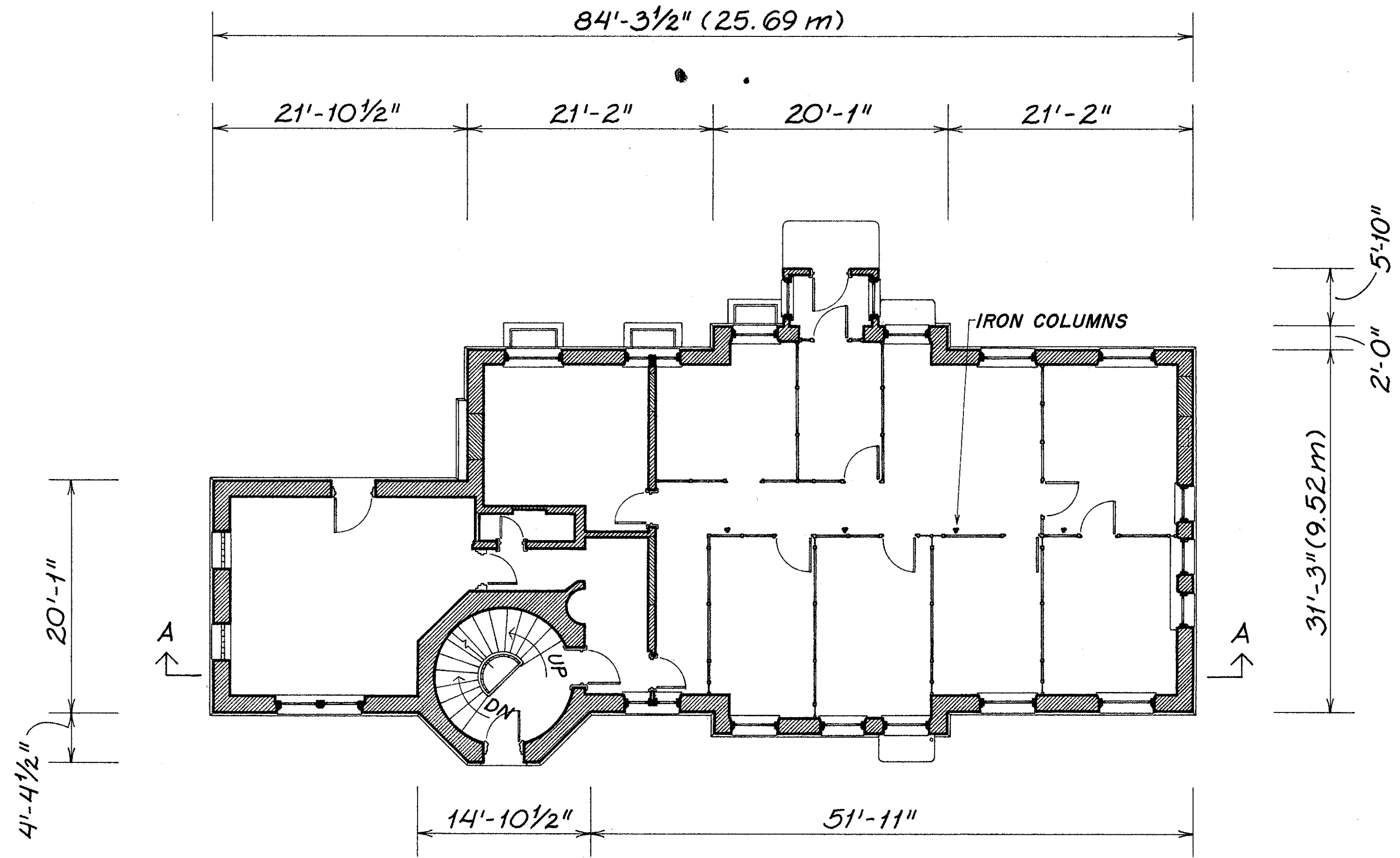
IF REPRODUCED, PLEASE CREDIT: HISTORIC AMERICAN ENGINEERING RECORD, NATIONAL PARK SERVICE, NAME OF DELINEATOR, DATE OF THE DRAWING

TRIM LINE

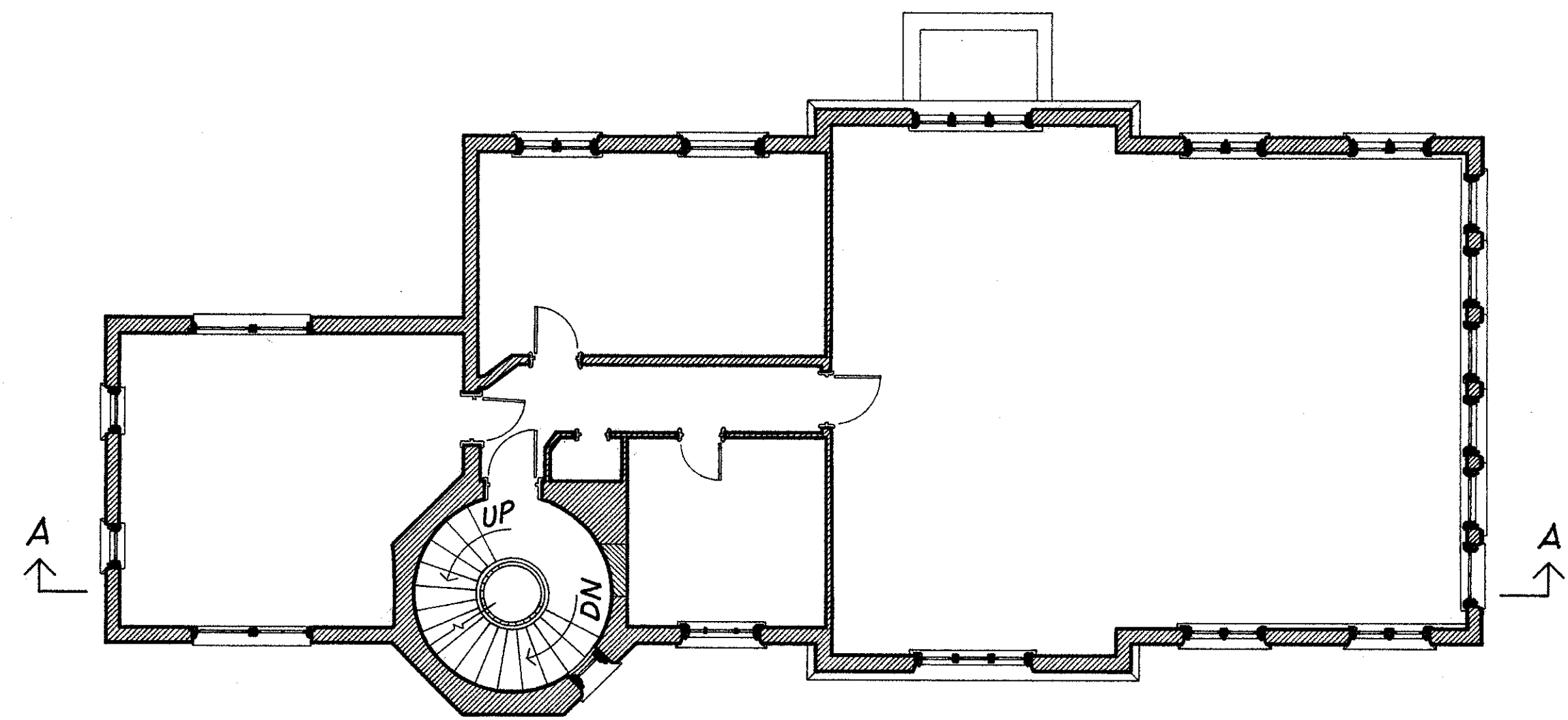
TRIM LINE



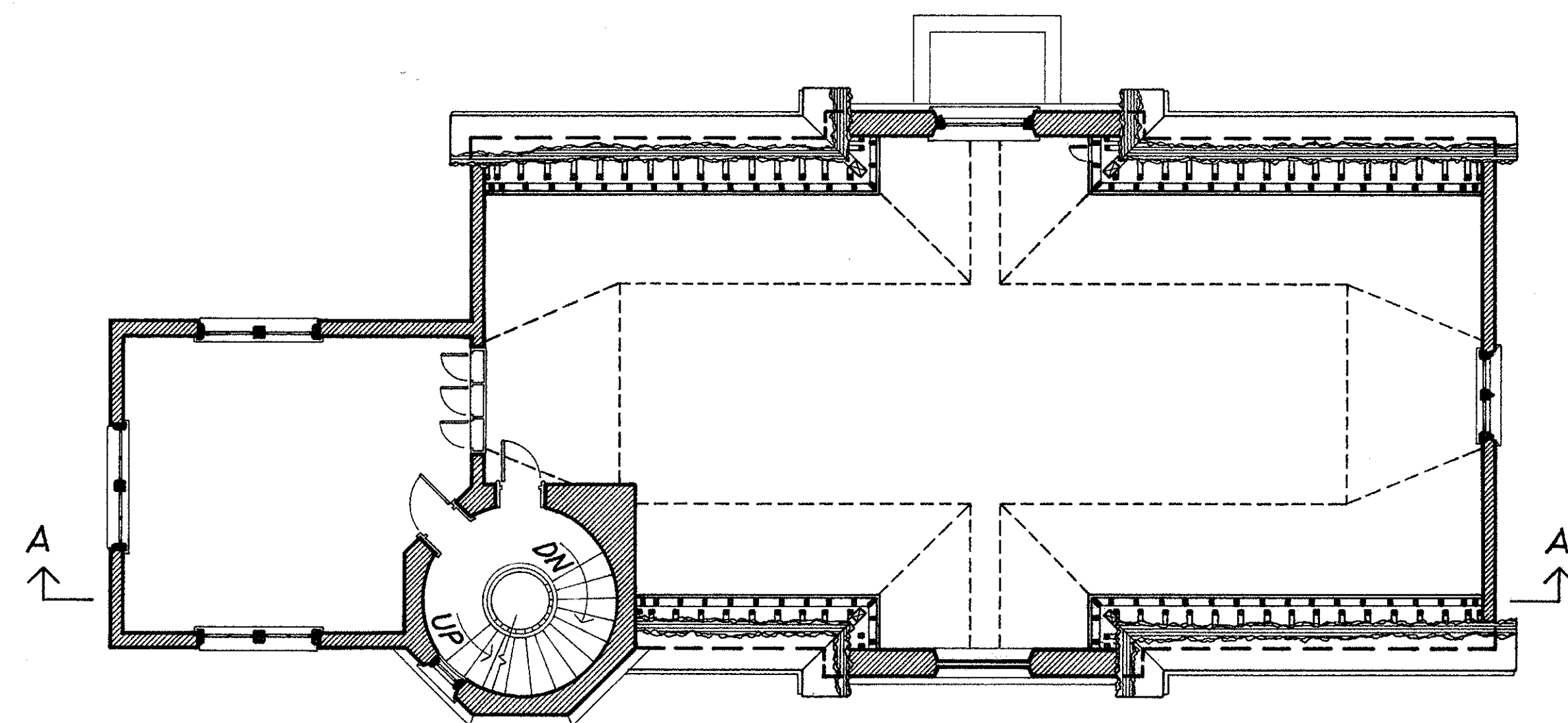
Basement Floor Plan



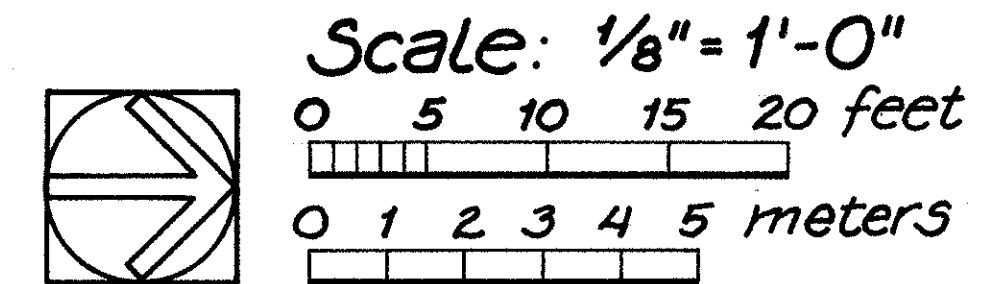
First Floor Plan



Second Floor Plan



Attic Floor Plan



DELINEATED BY: *Matthew Heppner, 1987*

SOUTHWESTERN PENNSYLVANIA RECORDING PROJECT
HISTORIC AMERICAN ENGINEERING RECORD
UNITED STATES DEPARTMENT OF THE INTERIOR

JOHNSTOWN

CAMBRIA IRON COMPANY, ROLLING MILL OFFICE CA. 1874
EAST BANK OF CONEMAUGH RIVER .5 MILES NORTH OF STONYCREEK CONFLUENCE
CAMBRIA COUNTY

PENNSYLVANIA

SHEET 2 of 2

HISTORIC AMERICAN
ENGINEERING RECORD
PA-109-C

IF REPRODUCED, PLEASE CREDIT: HISTORIC AMERICAN ENGINEERING RECORD, NATIONAL PARK SERVICE, NAME OF DELINEATOR, DATE OF THE DRAWING