

140 Colgate Avenue (House)
(Cambria Steel Company House VII)
Westmont Neighborhood
140 Colgate Avenue
Johnstown
Cambria County
Pennsylvania

HABS No. PA-5683

HABS
PA,
11-Joto,
80 -

PHOTOGRAPHS
WRITTEN HISTORICAL AND DESCRIPTIVE DATA

Historic American Buildings Survey
National Park Service
Department of the Interior
Washington, D.C. 20013-7127

HISTORIC AMERICAN BUILDINGS SURVEY

140 COLGATE AVENUE (HOUSE)
(Cambria Steel Company House VII)

HABS No. PA-5683

HABS,
PA,
11-JOTO,
80-

Location: 140 Colgate Avenue, Westmont, Johnstown, Cambria County, Pa.

Description: Large single-family home. Two-and-a-half stories, front gable, wood frame, horizontal wood siding. Fish-scale shingles on second-floor walls and in gables. Two-story bay window in front, front porch with hip roof.

History: One of four houses built on Colgate Avenue by Cambria Steel Co. in 1911. The company purchased the plans, specifications, and a bill of materials from Sears, Roebuck & Co. (model nos. 137 and 164 from the "Modern Homes" catalogue). The company spent \$3,575.82 to complete construction, which does not include the value of land.

The house was transferred to Catherine Benschhoff, the widow of Benjamin, from Cambria Iron Co. on March 17, 1916. In 1911 she lived in Rosedale. By 1918, Catherine Benschhoff is listed as residing at this address.

Sources:

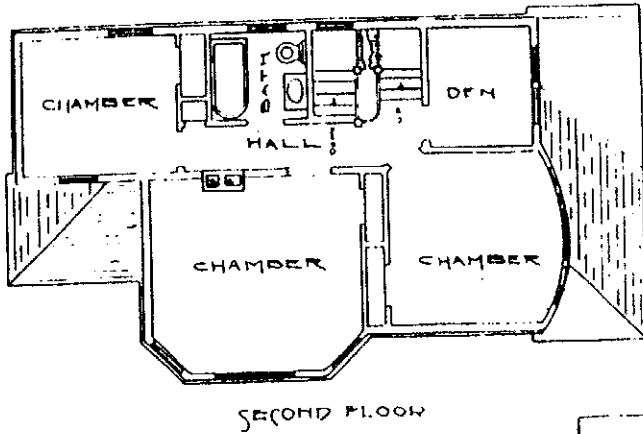
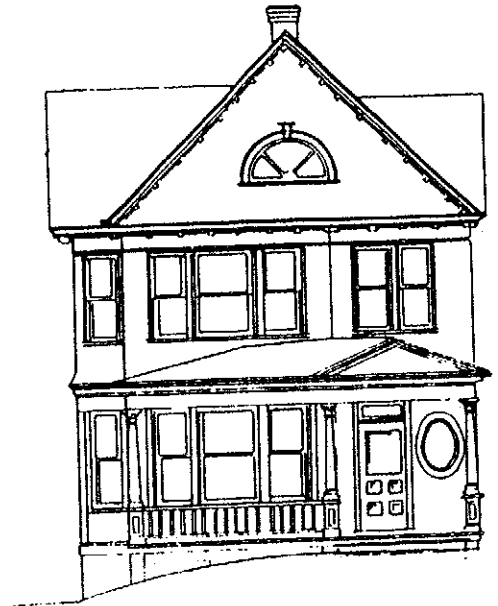
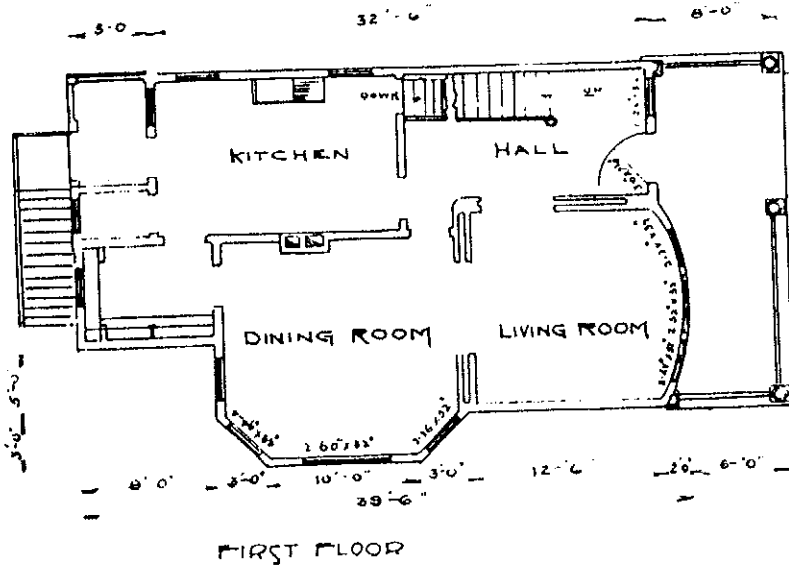
Deed Records (426:64), Cambria County Courthouse, Ebensburg, Pa.
Johnstown City Directories, 1911-12, p. 121, 1918 p. 117.

Sanborn Map Co, Westmont, Pennsylvania, (New York: The Sanborn Map Co., 1913).

Project Information: This report was part of a larger project to document the city of Johnstown, Pennsylvania. The project was undertaken by the Historic American Buildings Survey/Historic American Engineering Record (HABS/HAER), Robert Kapsch, chief, at the request of America's Industrial Heritage Project (AIHP). An overview of history of the city (HABS No. PA-5669) and an overview of the neighborhood of Westmont (HABS No. PA-5671) provide context for these buildings as well as a comprehensive list of sources. See also additional HABS reports on buildings in the downtown and other neighborhoods.

This report was prepared by Natalie Gillespie in August 1988 under the direction of Alison K. Hoagland, HABS historian, and Kim E. Wallace, the supervisory historian of the project. Gillespie's and other project historians' work was published as The Character of a Steel Mill City: Four Historic Neighborhoods of Johnstown, Pennsylvania (Washington, D.C.: HABS/HAER, National Park Service, 1989), edited by Kim E. Wallace. Illustrations in the publication include large format photographs taken by HAER photographer Jet Lowe and 35 mm photographs taken by the project historians.

140 COLGATE AVNEUE (HOUSE)
 (Cambria Steel Company House VII)
 HABS No. PA-5683 (Page 2)



Plans and elevations of
 Cambria Steel Company House,
 140 Colgate Ave., Westmont.
 Drawing by Cambria Steel Company,
 1911. Collection: Johnstown Flood
 Museum.