

146 Colgate Avenue (House)
(Cambria Steel Company House I)
Westmont Neighborhood
146 Colgate Avenue
Johnstown
Cambria County
Pennsylvania

HABS No. PA-5684

HABS

PA

11-1010

81-

PHOTOGRAPHS
WRITTEN HISTORICAL AND DESCRIPTIVE DATA

Historic American Buildings Survey
National Park Service
Department of the Interior
Washington, D.C. 20013-7127

HISTORIC AMERICAN BUILDINGS SURVEY

146 Colgate Avenue (House)
(Cambria Steel Company House I)

HABS No. PA-5684

HABS,
PA,
11-JOTO,
81-

Location: 146 Colgate Avenue, Westmont, Johnstown, Cambria County, Pa.

Description: Spacious two-and-a-half-story, two-bay single-family dwelling sheathed with cypress, fish-scale shingles. The four-room first-floor plan measures 32'-6" x 22'-6". Hip roof has several jerkinhead gables and a single brick chimney stack in the center of the main roof. A front gable and one side gable both feature a half-round sunburst window resting on two six-over-six-light windows. Hipped-roof front porch with Doric columns and a small second-story balcony. Rear porch leads out to back staircase.

History: One of four wood-frame dwellings on Third Avenue (Colgate Avenue) that Cambria Steel Company built in 1911 at a cost of \$3575.82 each. The company purchased two house designs with building plans from Sears Roebuck & Co.'s catalogue, "Modern Homes." Detailed specifications concerning the construction of these houses from company records are available.

Jessie F. DeWitt purchased the house from Dudley J. Corning, superintendent of Cambria Iron Company's Mining Engineering Department, on February 19, 1914, for \$5,000. Corning had been in charge of erecting these houses, and approximately three years after their completion he purchased 146 Colgate Avenue on October 31, 1914, for \$5,000. Between 1911 and 1914 the house had been occupied by tenants employed by Cambria Steel Company.

According to the 1911-12 city directory, DeWitt was employed as a manicurist and worked out of her residence in the Title Trust Building. After the purchase of her home, she maintained the same working address; however, her occupation became a chiroprapist.

Sources:

Deed (247:644, 265:38, 300:162, 307:318, 333:222, 366:255, 441:91, 447:303, 468:370, and 497:238). Cambria County Courthouse, Ebensburg, Pa.

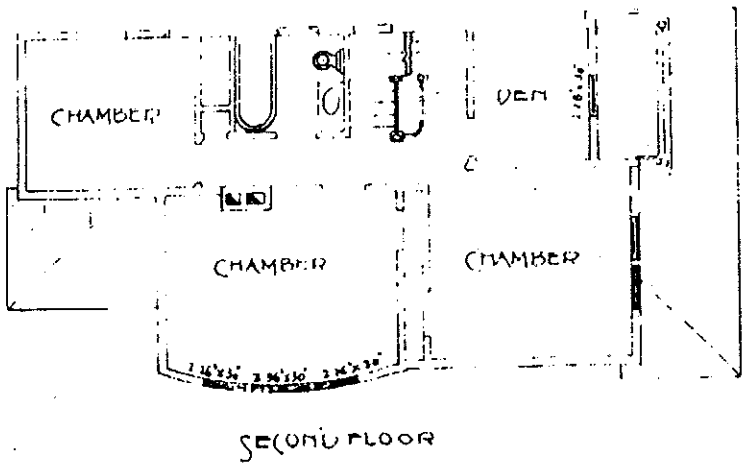
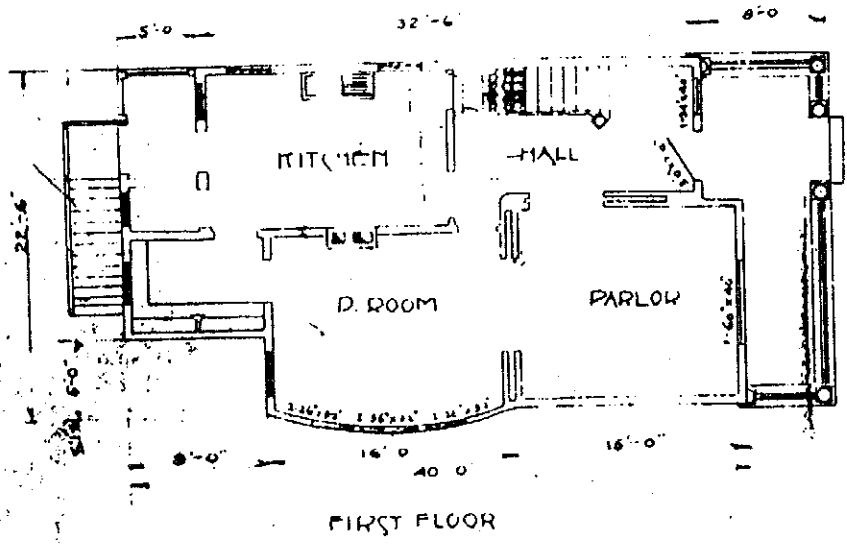
Johnstown City Directories. 1911-12 and 1918.

"Westmont Borough (General 1908, 1910, 1911, 1912, and 1913)," box: Cambria Steel, Acc 1699, BSC, Hagley Museum, Wilmington, De.

Project Information: This report was part of a larger project to document the city of Johnstown, Pennsylvania. The project was undertaken by the Historic American Buildings Survey/Historic American Engineering Record (HABS/HAER), Robert Kapsch, chief, at the request of America's Industrial Heritage Project (AIHP). An overview of history of the city (HABS No. PA-5669) and an overview of the neighborhood of Westmont (HABS No. PA-5671) provide context for these buildings as well as a comprehensive list of sources. See also additional HABS reports on buildings in the downtown and other neighborhoods.

This report was prepared by Cheryl Powell in August 1988 under the direction of Alison K. Hoagland, HABS historian, and Kim E. Wallace, the supervisory historian of the project. Powell's and other project historians' work was published as The Character of a Steel Mill City: Four Historic Neighborhoods of Johnstown, Pennsylvania (Washington, D.C.: HABS/HAER, National Park Service, 1989), edited by Kim E. Wallace. Illustrations in the publication include large format photographs taken by HAER photographer Jet Lowe and 35 mm photographs taken by the project historians.

146 COLGATE AVENUE (HOUSE)
 (Cambria Steel Company House I)
 HABS No. PA-5684 (Page 3)



Plan and elevation of
 Cambria Steel Company House,
 146 Colgate Ave., Westmont.
 Drawing by Cambria Steel
 Company, 1911. Collection:
 Johnstown Flood Museum.

