

Russel C. and Lucy Love House
Westmont Neighborhood
535 Tioga Street
Johnstown
Cambria County
Pennsylvania

HABS No. PA-5733-A

HABS
PA,
11-Joto,
100-A-

PHOTOGRAPHS
WRITTEN HISTORICAL AND DESCRIPTIVE DATA

Historic American Buildings Survey
National Park Service
Department of the Interior
Washington, D.C. 20013-7127

HISTORIC AMERICAN BUILDINGS SURVEY

RUSSEL C. AND LUCY LOVE HOUSE

HABS No. PA-5733-A

HABS
PA,
11-JOTO,
100-A-

Location: 535 Tioga Street, Westmont, Johnstown, Cambria County, Pa.

Description: Massive single-family home on corner site. Wrap-around porch supported by rough-hewn ashlar pillars. Wood frame, two-and-a-half stories. Steep side-gabled roof and large dormers covered with wooden shingles, eyebrow dormer. Large ashlar chimney. Zinc came lattice glass in upper sash of windows.

Interior includes unusual curved hardwood staircase with spiral turned balusters. Large living room panelled in cross-grain mahogany, adjacent to solarium fitted with zinc came glass windows. Wood panelling of poplar in other rooms, soft wood used in attic. Maid's quarters in attic include built-in cedar chests. Original call buttons for servants on first and second floors.

Servants' entrance in rear, adjacent to a small porch, has been changed to a dining nook. Kitchen has been modernized. Present owners are restoring house to original state by removing paint and replacing worn woodwork with exact copies.

Stone and wood shingle stable built on the alley, as was required in the original deed. Living quarters for servants above stables.

History: The house was designed ca. 1912 by architect Henry M. Rogers for Russel C. and Lucy Love. The Loves acquired the property in January 1912, and the house is indicated on the 1913 Sanborn map.

Russel Love was a son of one of the founders of Love and Sunshine Co. His ancestors came to America from Cork, Ireland, and Scotland. He and his brother, Joseph K. Love, president of the wholesale grocery firm, were satirized in a 1907 book of caricatures of prominent Johnstown personalities. Russel was shown as the "Candy Kid," a reference to this young candy company leader. Storey's history lists him as "at home, and unmarried" the same year. He lived at 837 Napoleon St., until 1911, when he was President and Treasurer of F.S. Love Manufacturing Co.

In 1912 his wife, Lucy Haws Love, paid \$4,875 for two-and-one-half lots, from Cambria Iron Co. The deed stipulated that the dwelling erected must cost at least \$4,500. In 1913 the Loves were listed at this address, an area of large, luxurious homes.

Mrs. Love was one of the few Johnstown matrons to have a personal lady's maid as well as a staff of live-in help and day maids. The couple were members of the Rolling Rock Race Club of Ligonier. They entertained elites, such as the Mellon family. Due to financial losses of the Great Depression they eventually sold the home.

Sources:

Deeds: 237:562, 514:254, 1112:352.

Interview with Sandra King, present owner the house, August 2, 1988.

RUSSEL C. AND LUCY LOVE HOUSE
HABS No. PA-5733-A (Page 2)

Johnstown City Directories, 1907-08, 1911-12, 1913.

The Jolly Jokers of the Town of Johns and Cambria County Cut-ups -- A Collection of Caricatures (Roycrofters: East Aurora, New York: 1907).

Storey, Henry Wilson, History of Cambria County, Pa. (New York, 1907), 3:126.

Sanborn Map Co., Westmont, Pennsylvania (New York, 1913).

Project Information: This report was part of a larger project to document the city of Johnstown, Pennsylvania. The project was undertaken by the Historic American Buildings Survey/Historic American Engineering Record (HABS/HAER), Robert Kapsch, chief, at the request of America's Industrial Heritage Project (AIHP). An overview of history of the city (HABS No. PA-5669) and an overview of the neighborhood of Westmont (HABS No. PA-5671) provide context for these buildings as well as a comprehensive list of sources. See also additional HABS reports on buildings in the downtown and other neighborhoods.

This report was prepared by Natalie Gillespie in August 1988 under the direction of Alison K. Hoagland, HABS historian, and Kim E. Wallace, the supervisory historian of the project. Gillespie's and other project historians' work was published as The Character of a Steel Mill City: Four Historic Neighborhoods of Johnstown, Pennsylvania (Washington, D.C.: HABS/HAER, National Park Service, 1989), edited by Kim E. Wallace. Illustrations in the publication include large format photographs taken by HAER photographer Jet Lowe and 35 mm photographs taken by the project historians.

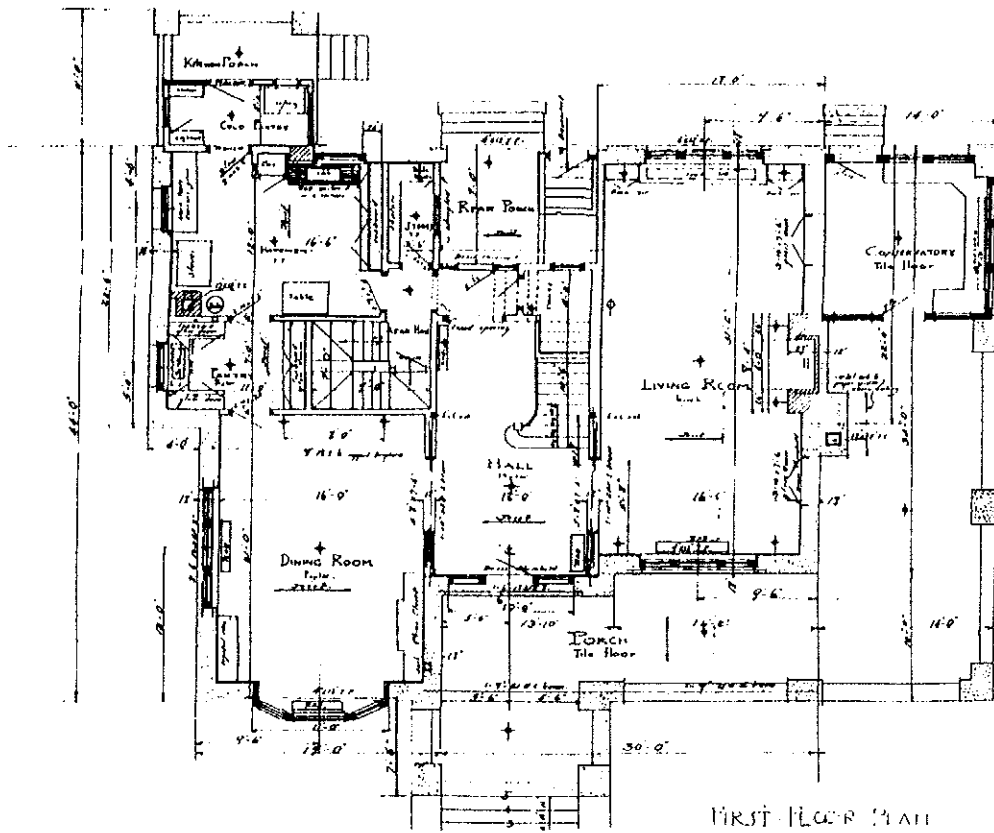
RUSSEL C. AND LUCY LOVE HOUSE
HABS No. PA-5733-A (Page 3)



FRONT ELEVATION.

Elevation for Love House, 535 Tioga St., Westmont, Henry Rogers, architect. Collection: Philip Newbaker, Westmont.

First floor plan for Love House, 535 Tioga St., Westmont, Henry Rogers, architect.
Collection: Philip Newbaker, Westmont.



Russel C. and Lucy Love Stable
Westmont Neighborhood
535 Tioga Street
Johnstown
Cambria County
Pennsylvania

HABS No. PA-5733-B

HABS
PA,
11-JoTo,
100-B-

PHOTOGRAPHS
WRITTEN HISTORICAL AND DESCRIPTIVE DATA

Historic American Buildings Survey
National Park Service
Department of the Interior
Washington, D.C. 20013-7127

HISTORIC AMERICAN BUILDINGS SURVEY

RUSSEL C. AND LUCY LOVE STABLE

HABS No. PA-5733-B

HABS
PA
100-8-

Location: 535 Tioga Street, Westmont, Johnstown, Cambria County, Pa.

Description: The stone and wood shingle stable was built on the alley, as was required in the original deed. Living quarters for servants above stables.

History: The house was designed ca. 1912 by architect Henry M. Rogers for Russel C. and Lucy Love. The Loves acquired the property in January 1912, and the house is indicated on the 1913 Sanborn map.

Sources:

Deeds: 237:562, 514:254, 1112:352.

Interview with Sandra King, present owner the house, August 2, 1988.

Johnstown City Directories, 1907-08, 1911-12, 1913.

The Jolly Jokers of the Town of Johns and Cambria County Cut-ups -- A Collection of Caricatures (Roycrofters: East Aurora, New York: 1907).

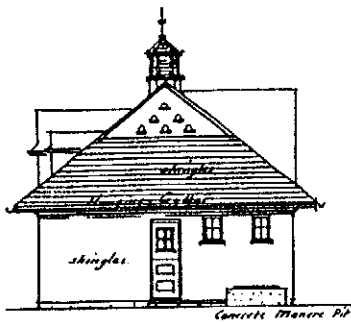
Storey, Henry Wilson, History of Cambria County, Pa. (New York, 1907), 3:126.

Sanborn Map Co., Westmont, Pennsylvania (New York, 1913).

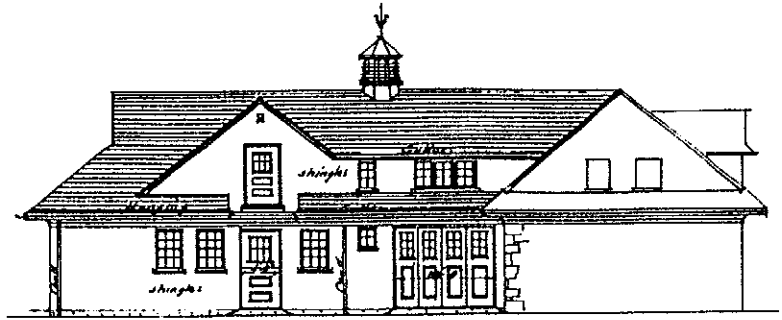
Project Information: This report was part of a larger project to document the city of Johnstown, Pennsylvania. The project was undertaken by the Historic American Buildings Survey/Historic American Engineering Record (HABS/HAER), Robert Kapsch, chief, at the request of America's Industrial Heritage Project (AIHP). An overview of history of the city (HABS No. PA-5669) and an overview of the neighborhood of Westmont (HABS No. PA-5671) provide context for these buildings as well as a comprehensive list of sources. See also additional HABS reports on buildings in the downtown and other neighborhoods.

This report was prepared by Natalie Gillespie in August 1988 under the direction of Alison K. Hoagland, HABS historian, and Kim E. Wallace, the supervisory historian of the project. Gillespie's and other project historians' work was published as The Character of a Steel Mill City: Four Historic Neighborhoods of Johnstown, Pennsylvania (Washington, D.C.: HABS/HAER, National Park Service, 1989), edited by Kim E. Wallace. Illustrations in the publication include large format photographs taken by HAER photographer Jet Lowe and 35 mm photographs taken by the project historians.

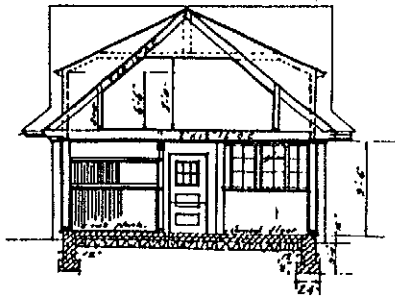
RUSSEL C. AND LUCY LOVE STABLE
 HABS No. PA-5733-B (Page 2)



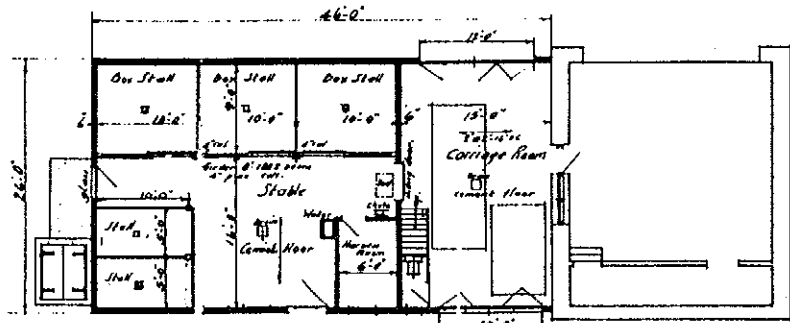
END ELEVATION



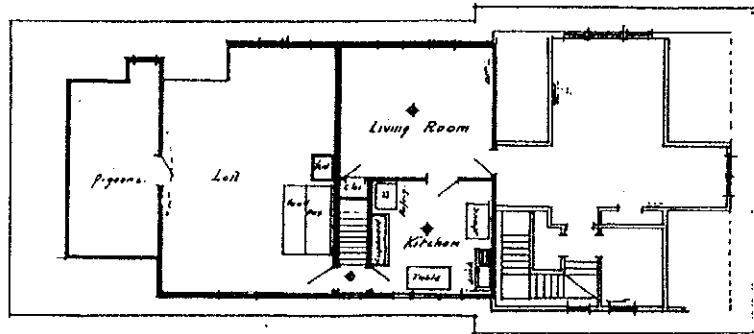
SOUTH ELEVATION.



SECTION.

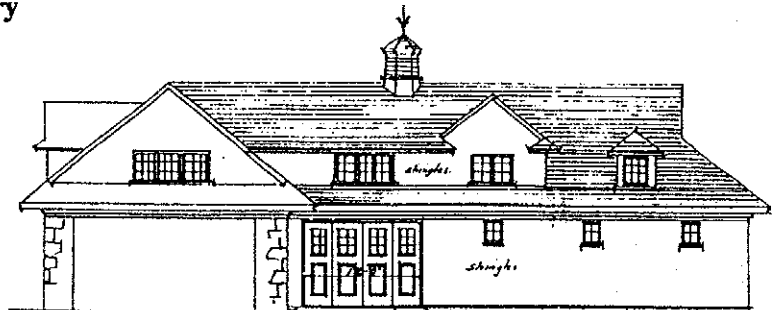


FIRST FLOOR PLAN.



SECOND FLOOR PLAN.

Plans and elevations for stable
 at 535 Tioga St., Westmont, Henry
 Rogers, architect. Collection:
 Philip Newbaker, Westmont.



NORTH ELEVATION.